

Cable glands & accessories

Cable Glands

Consumer Unit Gland Range

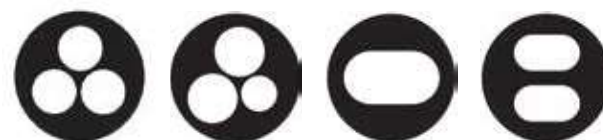
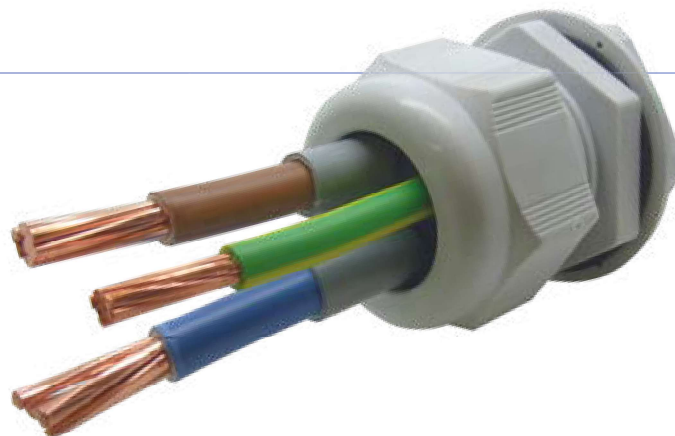
All consumer units must now comply with the 18th Edition Wiring Regulations to BS 7671:2018.

SWA's gland range helps you meet these new regulations.

SWA has a comprehensive range of special cable glands as new rules came into force aimed at preventing house fires caused by overheating consumer units.

Regulation 421.1.201, introduced under Amendment 3 to BS 7671, has been introduced because fire investigators reported increasing numbers of fires involving consumer units in plastic enclosures.

SWA's new range of glands features specially designed inserts, providing an effective seal against flames. Available in both metal and nylon versions, it covers the full spectrum of applications, including meter tails, earth tails and twin & earth cables.



Inserts for Main Tails and Twin & Earth Cable



Nylon Cable Gland



Metal Cable Gland

Reducers



Part No.	Type	Pack Qty
M32MXM40F-N	Nylon	Each
M32MXM40F-NP	Nickel-plated brass	Each

40mm female reducing to 32mm male

Membrane Cable Grommets

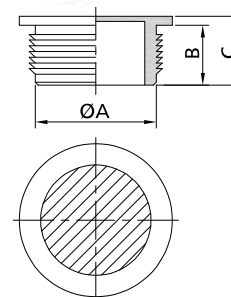
Application: Round membrane grommet in TPE to clip in that allows single cables, flat cables or several cables of small diameters to pass through it.

Materials: Polyethylene thermoplastic elastomer (TPE)

Colour: Light grey (RAL 7035)

Protection rating: IP 66 according EN 60529

Temp rating: -40°C to +80°C



Part No.	Dimensions in mm					Pack Qty
	Ø Cable max.	Ø A	B	C	Ø Boring	
CUMG20	13	20	9.5	11	20.5	10
CUMG25	18	25	9.5	11	25.5	10
CUMG32	25	32	9.5	11	32.5	5

Consumer Unit Gland Range – Selection Chart

Threaded Version

Part Number	Description	Thread Size mm	Insert Detail
CUGN-TYPE1	Nylon M32 Grey for 2x16 Tails & 1x16 Earth Tail	32	
CUGN-TYPE2	Nylon M40 Grey for 2x25 Tails & 1x16 Earth Tail	40	
CUGB-TYPE3	Brass M32 for 2x16 Tails & 1x16 Earth Tail	32	
CUGB-TYPE4	Brass M40 for 2x25 Tails & 1x16 Earth Tail	40	
CUGN-TYPE5	Nylon M20 Grey for 1x1-1.5mm Flat Twin & Earth Cable	20	
CUGN-TYPE6	Nylon M20 Grey for 1x2.5-4.0mm Flat Twin & Earth Cable	20	
CUGN-TYPE7	Nylon M20 Grey for 1x6mm Flat Twin & Earth Cable	20	
CUGN-TYPE8	Nylon M25 Grey for 2x2.5mm Flat Twin & Earth Cable	25	
CUGN-TYPE9	Nylon M32 Grey for 1x10mm Flat Twin & Earth Cable	32	
CUGN-TYPE10	Nylon M40 Grey for 1x16mm Flat Twin & Earth Cable	40	
CUGB-TYPE11	Brass M20 for 1x1-1.5mm Flat Twin & Earth Cable	20	
CUGB-TYPE12	Brass M20 for 1x2.5-4mm Flat Twin & Earth Cable	20	
CUGB-TYPE13	Brass M20 for 1x6mm Flat Twin & Earth Cable	20	
CUGB-TYPE14	Brass M25 for 2x2.5mm Flat Twin & Earth Cable	25	
CUGB-TYPE15	Brass M32 for 1x10mm Flat Twin & Earth Cable	32	
CUGB-TYPE16	Brass M40 for 1x16mm Flat Twin & Earth Cable	4	

SmartFit™ Gland Version

Part Number	Description	Thread Size mm	Insert Detail
CUSFGN-TYPE1	Nylon M32 Grey for 2x16 Tails & 1x16 Earth Tail	32	
CUSFGN-TYPE2	Nylon M40 Grey for 2x25 Tails & 1x16 Earth Tail	40	
CUSFGB-TYPE3	Brass M32 for 2x16 Tails & 1x16 Earth Tail	32	
CUSFGB-TYPE4	Brass M40 for 2x25 Tails & 1x16 Earth Tail	40	
CUSFGN-TYPE5	Nylon M20 Grey for 1x1-1.5mm Flat Twin & Earth Cable	20	
CUSFGN-TYPE6	Nylon M20 Grey for 1x2.5-4.0mm Flat Twin & Earth Cable	20	
CUSFGN-TYPE7	Nylon M20 Grey for 1x6mm Flat Twin & Earth Cable	20	
CUSFGN-TYPE8	Nylon M25 Grey for 2x2.5mm Flat Twin & Earth Cable	25	
CUSFGN-TYPE9	Nylon M32 Grey for 1x10mm Flat Twin & Earth Cable	32	
CUSFGN-TYPE10	Nylon M40 Grey for 1x16mm Flat Twin & Earth Cable	40	
CUSFGB-TYPE11	Brass M20 for 1x1-1.5mm Flat Twin & Earth Cable	20	
CUSFGB-TYPE12	Brass M20 for 1x2.5-4mm Flat Twin & Earth Cable	20	
CUSFGB-TYPE13	Brass M20 for 1x6mm Flat Twin & Earth Cable	20	
CUSFGB-TYPE14	Brass M25 for 2x2.5mm Flat Twin & Earth Cable	25	
CUSFGB-TYPE15	Brass M32 for 1x10mm Flat Twin & Earth Cable	32	
CUSFGB-TYPE16	Brass M40 for 1x16mm Flat Twin & Earth Cable	40	

